

# ***STISD FINE ARTS ACADEMY***

# **AUDITION PIECES**

**ACTING +**    **Memorize one of the following pieces**  
**DANCE:**    **AND sing the opening to “Where are you Christmas”**

## **NARRATOR:**

The Grinch hated Christmas. Everything about the entire Christmas season. Now, please don't ask why. No one quite knows the reason. It could be perhaps that his shoes were too tight. It could be that his head wasn't screwed on just right. But I think that the most likely reason of all may have been that his heart was two sizes too small.

## **CINDY LOU:**

But sir, we are Whos. And no matter how different someone may appear, don't we always say we will welcome them in with Christmas Cheer? So why not the Grinch. The Cheermeister award is for the one who deserves a pat on the back, it's for someone who needs it the most to give them that extra christmas cheer. And I believe that the Grinch needs it the most. And if you are the Who's that I hope you are, you will too!!

## **GRINCH:**

Ha! She thinks I'm going! The nerve of her and those whos for inviting me down there on such short notice!

Even if I wanted to go, my schedule wouldn't allow it. Let me see...

4pm wallow in self-pity

4.30 stare into the abyss

5.00 practice my nasty faces \*shows nasty faces to different audience members and ask them what they think\*

5.30 Pilates with Estelle Wallace

6.00 dinner with myself, I can't cancel again... it would just be rude of me!

7.00 an hour of self-loathing... maybe I could move it back to 9pm meaning I slip down to Whoville just for a little while.

All right then, I'm going to do it... I'll swing by just for a little while, I suppose it will allow them to envy me..

Wait what am I thinking I can't go! Maybe I'll arrive fashionably late. NO! I can't go.

Yes, No, Yes, No, Yes

Definitely NOT!

All right... I'm going and that's it!

## **MUSIC: Sing the first part of “Where Are You Christmas”**

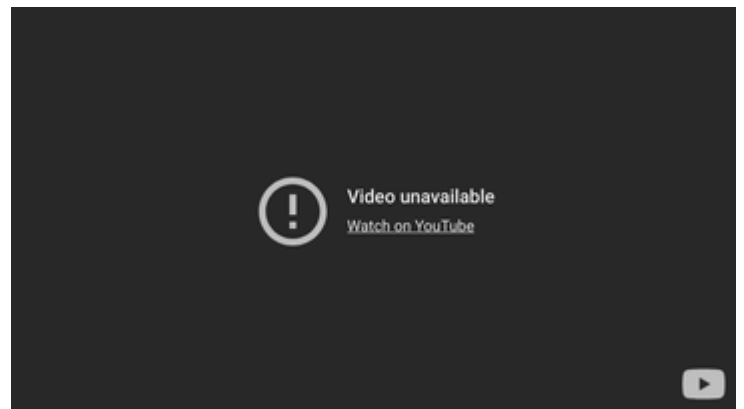
Where are you, Christmas?  
Why can't I find you?  
Why have you gone away?  
Where is the laughter  
You used to bring me?  
Why can't I hear music play?

My world is changing  
I'm rearranging  
Does that mean Christmas changes too?

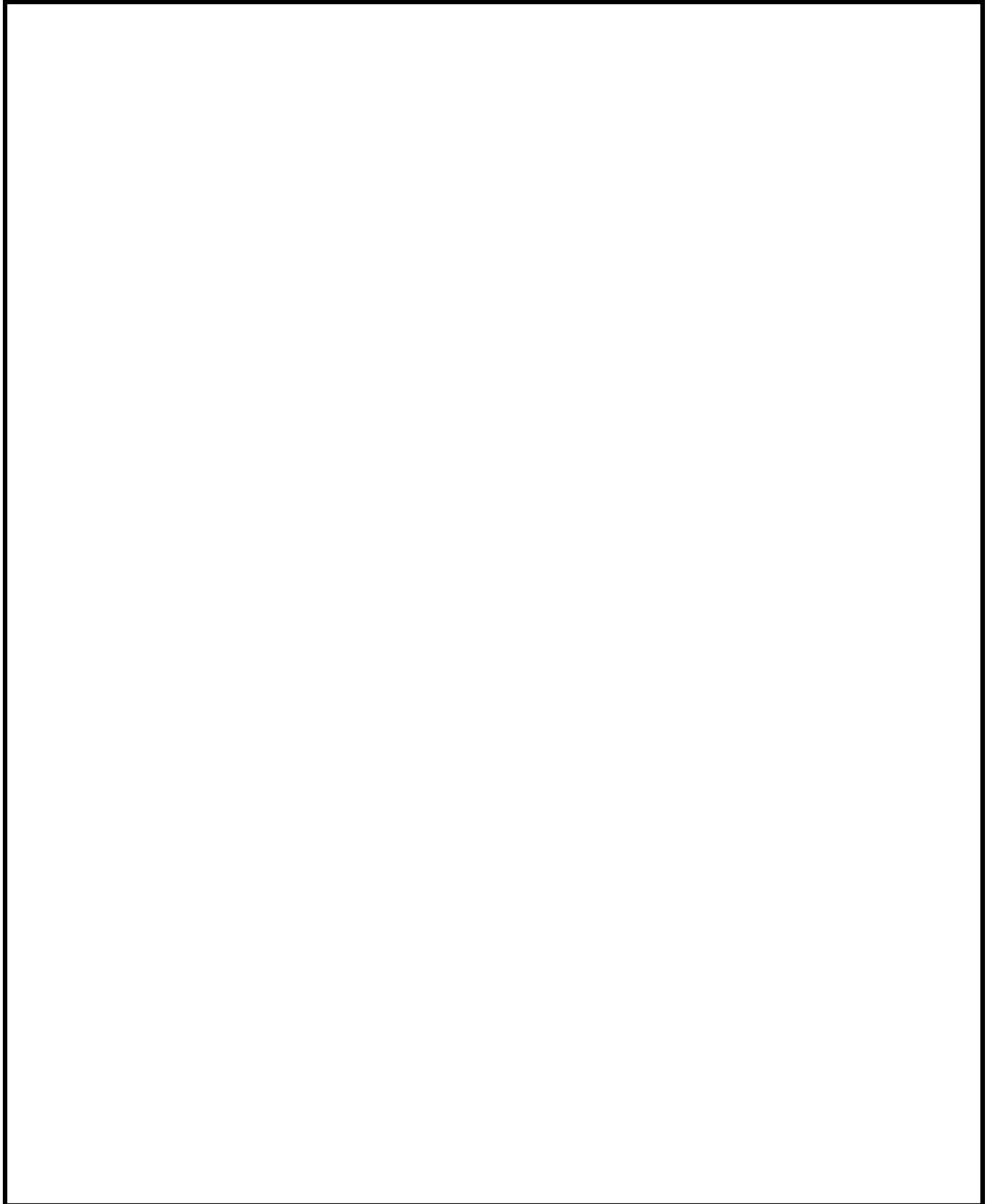
Where are you, Christmas?  
Do you remember  
The one you used to know?  
I'm not the same one  
See what the time's done  
Is that why you have let me go?

Christmas is here  
Everywhere, oh  
Christmas is here  
If you care, oh-oh-oh  
If there is love in your heart and your mind  
You will feel like Christmas all the time, oh

**MUSIC:**



**ART + PROPS +      Draw what you imagine the**  
**PRODUCTION CREW:   Grinch's lair would look like.**



# AUDITION SUBMISSION:

**If you are unable to make the Sept 21st in-person auditions, please submit a video of your acting/singing or a scan of your artwork using the link below.**

[https://forms.gle/QsTKu  
kuaZYbtJUe96](https://forms.gle/QsTKukuaZYbtJUe96)

